

USER MANUAL

Parameter:

Model	Rated Power (W)	Size (mm)
SRPL30X30-12W	12	295x295x9
SRPL30X30-18W	18	295x295x9
SRPL30X30-18W-2C	18	295x295x9
SRPL30X30-18W-5C	18	295x295x11.6
SRPL30X60-18W	18	295x595x9
SRPL30X60-24W	24	295x595x9
SRPL30X60-24W-2C	24	295x595x9
SRPL30X60-24W-5C	24	295x595x11.6
SRPL60X60-28W	28	595x595x9
SRPL60X60-30W	30	595x595x9
SRPL60X60-32WH	32	595x595x9
SRPL60X60-36W	36	595x595x9
SRPL60X60-36W-2C	36	595x595x9
SRPL60X60-36W-5C	36	595x595x11.6
SRPL60X60-36WH	36	595x595x9
SRPL60X60-40W	40	595x595x9
SRPL60X60-40WH	40	595x595x9
SRPL60X60-42W	42	595x595x9
SRPL60X60-45W	45	595x595x9
SRPL62X62-28W	28	620x620x11.3

SRPL62X62-30W	30	620x620x11.3
SRPL62X62-32W	32	620x620x11.3
SRPL62X62-36WM	36	620x620x11.3
SRPL62X62-36W-2C	36	620x620x11.3
SRPL62X62-36W-5C	40	620x620x11.6
SRPL62X62-40WH	40	620x620x11.3
SRPL62X62-42W	42	620x620x11.3
SRPL62X62-45W	45	620x620x11.3
SRPL15X120-28W	28	145x1195x11.3
SRPL15X120-30W	30	145x1195x11.3
SRPL15X120-32WH	32	145x1195x11.3
SRPL15X120-36W	36	145x1195x11.3
SRPL15X120-36WH	36	145x1195x11.3
SRPL30X120-28W	28	295x1195x11.3
SRPL30X120-30W	30	295x1195x11.3
SRPL30X120-32WH	32	295x1195x11.3
SRPL30X120-36W	36	295x1195x11.3
SRPL30X120-36-2C	36	295x1195x11.3
SRPL30X120-36W-5C	36	295x1195x11.6
SRPL30X120-40W-5C	40	295x1195x11.6
SRPL30X120-40WH	40	295x1195x11.3
SRPL30X120-42W	42	295x1195x11.3
SRPL30X120-45W	45	295x1195x11.3

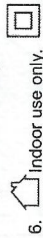
SRPL30X120-50WM	50	295x1195x11.3
SRPL30X120-50W-2C	50	295x1195x11.3
SRPL60X120-40W	40	595x1195x11.3
SRPL60X120-40W-5C	40	595x1195x11.6
SRPL60X120-45W	45	595x1195x11.3
SRPL60X120-50WH	50	595x1195x11.3
SRPL60X120-50WM	50	595x1195x11.3
SRPL60X120-50W-2C	50	595x1195x11.3
SRPL60X120-60WH	60	595x1195x11.3
SRPL15X150-28W	28	145x1495x11.3
SRPL15X150-30W	30	145x1495x11.3
SRPL15X150-32WH	32	145x1495x11.3
SRPL15X150-36W	36	145x1495x11.3
SRPL15X150-40W	40	145x1495x11.3
SRPL30X150-36W	36	295x1495x11.3
SRPL30X150-40WH	40	295x1495x11.3
SRPL30X150-42W	42	295x1495x11.3
SRPL30X150-45W	45	295x1495x11.3
SRPL30X30-12WH-BL	12	295x295x30
SRPL30X30-18WH-BL	18	295x295x30
SRPL30X60-24WH-BL	24	295x595x35
SRPL60X60-28WH-BL	28	595x595x35
SRPL60X60-30WH-BL	30	595x595x35
SRPL60X60-32WH-BL	32	595x595x35
SRPL60X60-36WH-BL	36	595x595x35
SRPL60X60-40WH-BL	40	595x595x35

SRPL62X62-32WH-BL	32	620x620x35
SRPL62X62-36WH-BL	36	620x620x35
SRPL62X62-40WH-BL	40	620x620x35
SRPL62X62-45WH-BL	45	620x620x35
SRPL30X120-28WH-BL	28	295x1195x35
SRPL30X120-30WH-BL	30	295x1195x35
SRPL30X120-32WH-BL	32	295x1195x35
SRPL30X120-36WH-BL	36	295x1195x35
SRPL30X120-40WH-BL	40	295x1195x35
SRPL60X120-50WH-BL	50	595x1195x35
SRPL60X120-60WH-BL	60	595x1195x35

Recessed in the ceiling, 220-240V~, 50/60Hz.
IP20, for indoor use only, Class II, ta: 40°C.

Notice:

1. Don't let the products fall down or rub with other things, otherwise the light will be damaged.
2. The installation must be strong and make sure the insulation of the wires connecting is reliable enough.
3. Prevent the light from water or other liquid, in order to avoid leakage and electric shock.
4. Don't put the product in the place with high temperature and high humidity.
5. The products are intended to use independent type SELV driver with output voltage not exceeding 60Vdc.



Indoor use only.

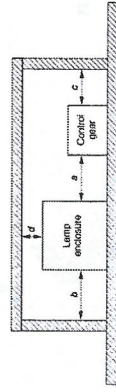


Class II.

7. The light source contained in this luminaire shall only be replaced by the manufacturer or his service agent or a similar qualified person.
8. The installation should be done by qualified electrician. If the external flexible cable or cord of this luminaire is damaged, it shall be exclusively replaced by the manufacturer or his service agent or a similar qualified person in order to avoid a hazard.



9. Warning — this luminaire is not suitable for installation in locations where thermal insulation is present, or may reasonably be expected to be installed in the future, or where there is a likelihood of other combustible material, e.g. leaves or vermin debris, etc. Collecting on or around the luminaire. It is not suitable for domestic installations or installation in residential areas of non-domestic installations (residential institutions, hotels, boarding houses, hospitals, accommodation houses, motels, hostels and the like).



The minimum separation: a=b=c=d=50mm.



10. Meaning of crossed out wheeled dustbin: Do not dispose of electrical appliances as unsorted municipal waste, use separate collection facilities contact your local government for information regarding the collection systems available. If electrical appliances are disposed of in landfills or dumps, hazardous substances can leak into the ground and water then get into the food chain, damaging your health and well-being.

Recessed Installation

1. Cut a hole on the ceiling to the size that specified on the package (cut out size) shall be maintained for this supply connection.
2. Turn off the power. Connect the fix wiring to the LED driver, double insulation
3. Connect the LED driver and luminaire.
4. Pull the spring of both sides towards the luminaire body then fit the luminaire into the cut out hole.
5. Turn on the power and check the product.

A: Built-in way

Rectangular LED Panel Lighting

Step 1

Turn off the switch

OFF

Step 2

Use the screws to fixed the bump on the ceiling

Step 3

Plug in power

Step 4

Turn on the switch

ON